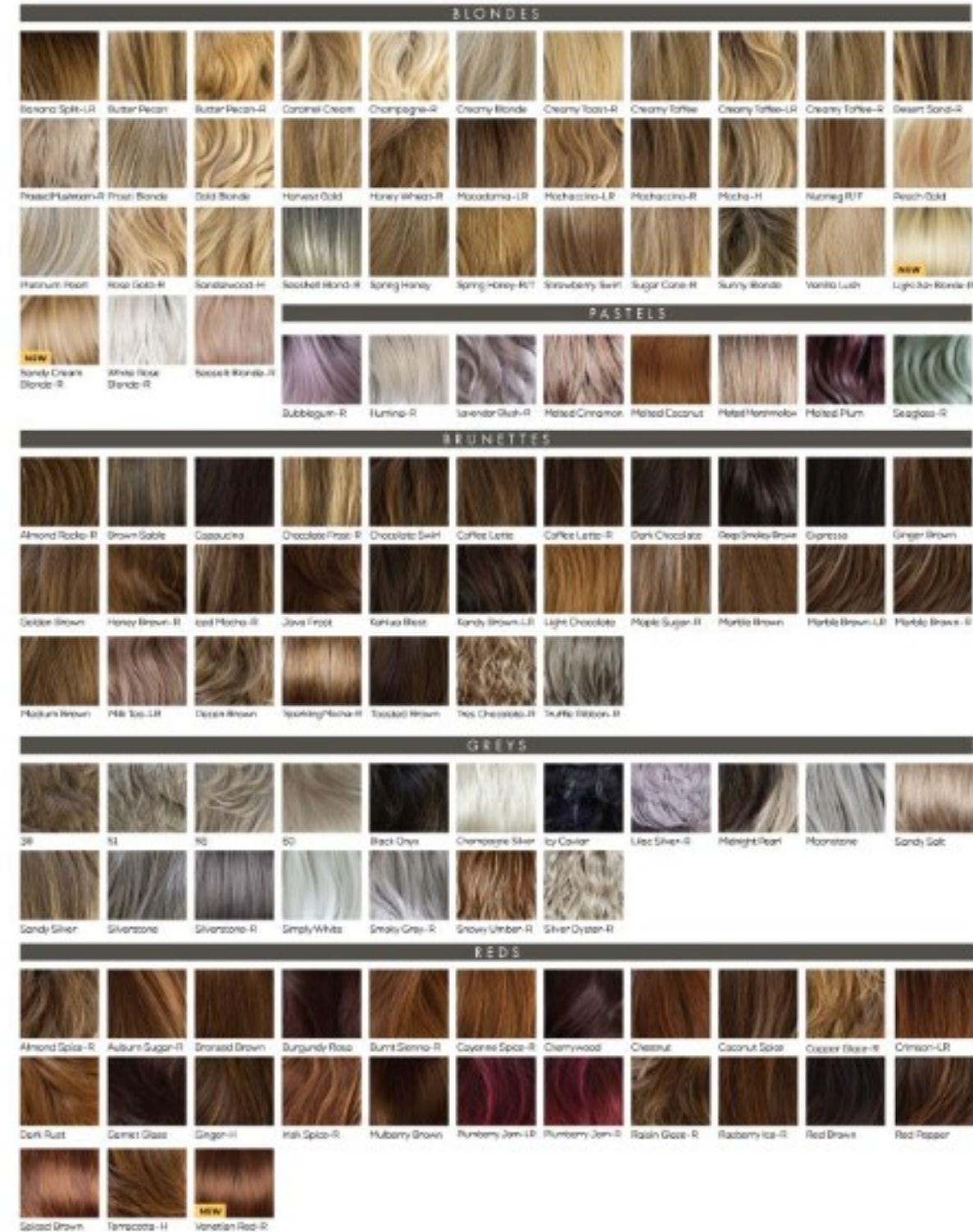


COLOUR CHART



NORIKO

COLLECTION 2025



Aderans
T R E N D C O

Aderans
T R E N D C O

Head Office & Mail Order
Sheridan House
114-116 Western Road
Hove
BN3 1DD
T: 01273 774 977
E: info@trendco.co.uk

Aderans Midlands
Unit 9, Barton Marina
Burton Upon Trent
Staffordshire
DE13 8AS
T: 0121 833 4280
E: midlands@trendco.co.uk

Trendco Hove
Sheridan House
114-116 Western Road
Hove
BN3 1DD
T: 01273 778 516
E: hove@trendco.co.uk

Trendco Liverpool (The Wiggins)
119 Penny Lane
Liverpool
L18 1DF
T: 0151 733 5826
E: liverpool@trendco.co.uk

Trendco London
The London Hair Clinic
27-28 Eastcastle Street
London
W1M 8DH
T: 0207 221 2646
E: london@trendco.co.uk

Trendco Manchester
3rd Floor, Lloyds House
18 Lloyd Street
Manchester
M2 5WA
T: 0161 834 6151
E: manchester@trendco.co.uk

Trendco Nottingham
Suite 1A, The Hub
40 Friar Lane
Nottingham
NG1 6DO
T: 0115 947 6316
E: nottingham@trendco.co.uk

Aderans Edinburgh (AGA Studios)
Garden Level,
Orchard Brae House
30 Queensferry Rd
Edinburgh
EH4 2HS
T: 0131 556 7057
E: edinburgh@trendco.co.uk



aderansuk.com
aderanshaircentre.co.uk

WIG BASES



The Noriko collection is available in a number of different caps, each produced with your comfort in mind! Within this brochure there is truly something for everybody.



Part Mono Cap
A partial monofilament top on one side for easy directional movement.



Monofilament Cap
A monofilament top, perfect for a natural hair movement.



Machine Made
A classic, fully machine-welved cap with a lace lining.



Feather Light Machine Welved Cap
As light as a feather, this machine-welved cap offers extreme comfort and is incredibly lightweight.



Lace Front/Lace Part
A lightweight, comfortable top with an invisible hairline.

NORIKO SYNTHETIC FIBRE:

The Noriko Collection offers remarkable quality, with expertly-crafted synthetic fibre used across the collection. Noriko fibre provides a movement that is similar to that of human hair and can be textured or tweaked using water-based hair products.

NEW NATURAL MOVEMENT FIBRE:

Introducing our newest innovation in hair technology - Natural Movement Fibre (NM). This revolutionary fibre features a blend of heat-friendly and synthetic fibres to give you the ultimate styling experience.

