

GEM

The Trendco Gem Collection is one of the most popular human hair wig collections available, making them precious gems to have! All the wigs are constructed on a completely hand tied foundation, and designed with a soft lace front and a smooth monofilament top, offering complete comfort with a natural finish.

Although styled for the photos in this brochure, every Gem comes completely **un-styled**, all in one length, ready to style to perfection, just for you! The Gem items featured in this brochure have been cut and styled enabling you to see the different length and styling options that can be created. All Gem wigs are made from Remy Hair and are available in an array of stunning natural colours. Please take a look at the colour chart to match your perfect colour.



Shop our Human Hair collections online now using your mobile phone

BASES

GEM

- Double layer mono top (silky and smooth)
- Six angle stretch-net (maximum comfort)
- Velvet nape
- 0.5cm lace front
- Elasticated adjustable hook



JET/SAPPHIRE

- Double layer mono top (silky and smooth)
- Six angle stretch-net (maximum comfort)
- Velvet nape
- Extended lace front
- Elasticated adjustable hook



PEARL

- French drawn top
- Extended lace front (temple to temple)
- Zigzag connection between lace and anti-slip silicone front
- Stretch-net for maximum comfort
- Anti-slip PU strips (3x each side, 5x back)
- Soft velvet nape area
- Elasticated adjustable hook



PLATINUM

- Secure fit cap
- Natural lace front
- Anti-slip tabs



SUPPLEX

- 5cm – 7.5cm Clear PU Circumference
- 2 x Areas of fine Monofilament
- 100% hand-tied
- Lightweight
- Base can be resized
- Perfect for those with 100% hair loss





COLOUR SHOWN: 3/4-31

AMBER / AMBER PETITE

Cap Construction: Lace Front, Monofilament Top

Cap Size: 52-54cm (Petite: 50cm)

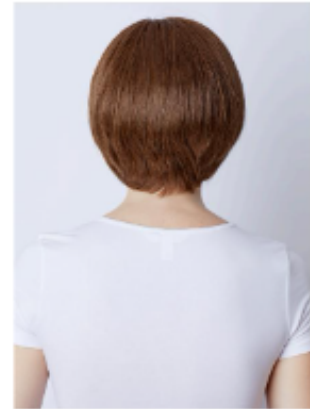
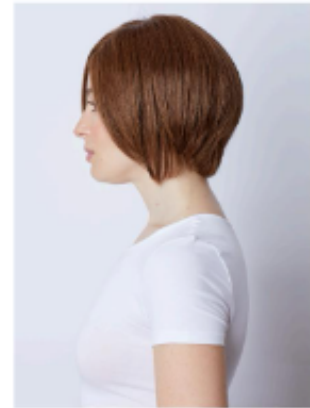
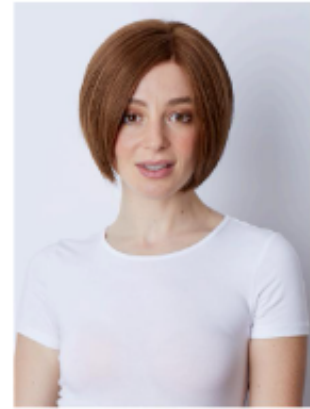
Length: 12-14" (31-33cm)

AVAILABLE COLOURS

Blondes: 102/22R, 14, 20R, 245, 246R, 25, 26, 26/22, 6/14R, 6/24R, 613 **Brunettes:** 1B, 2, 3, 3/4-31, 3/5LR, 468, 5, 8, 8/32 **Reds:** 2/135R*, 31, 32*, 33/130*



*While Socks last



COLOUR SHOWN: 5

CRYSTAL

Cap Construction: Lace Front, Monofilament Top, Machine Wefting at Nape

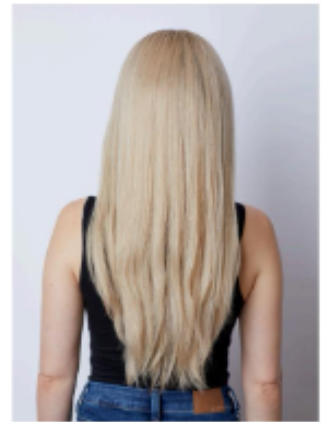
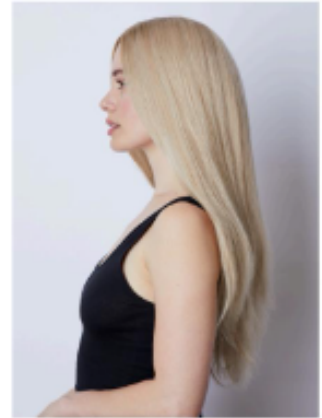
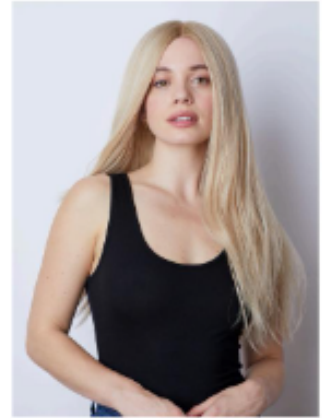
Cap Size: 52-54cm

Length: 2-6" (6-10cm)

AVAILABLE COLOURS

Blondes: 102/22R, 14, 245, 246R, 25, 26, 26/22, 6/14R, 6/24R, 613* **Brunettes:** 1B, 2*, 3, 3/4-31*, 468*, 5, 8, 8/32 **Reds:** 2/135R*, 31, 32*, 33/130*





COLOUR SHOWN: 2DR

DIAMOND

Cap Construction: Lace Front, Monofilament Top

Cap Size: 52-54cm

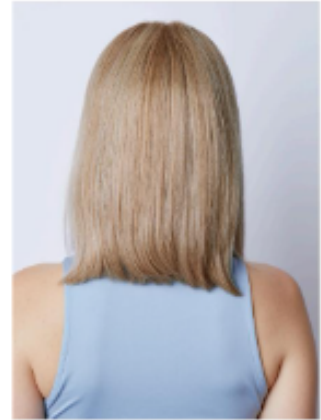
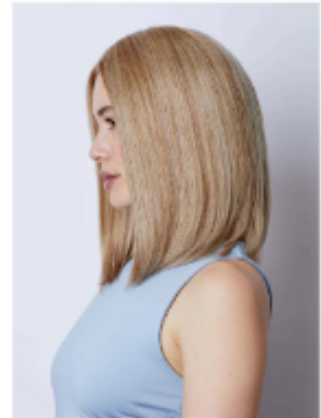
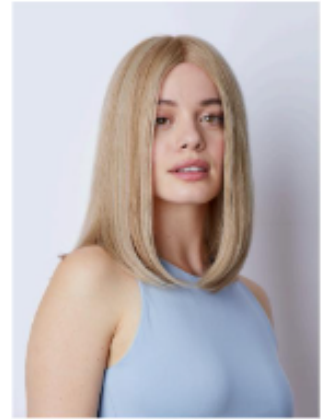
Length: 18" (45cm)

AVAILABLE COLOURS

Blondes: 102/22R, 14, 20R, 245, 246R, 25, 26, 26/22, 6/14R, 6/24R, 613, **Brunettes:** 1B, 2, 3, 3/4-31, 3/5LR, 468, 5, 8, 8/32, **Reds:** 2/135R*, 31, 32*, 33/130*



*Whit Stacks Last



COLOUR SHOWN: 25

EMERALD

Cap Construction: Lace Front, Monofilament Top

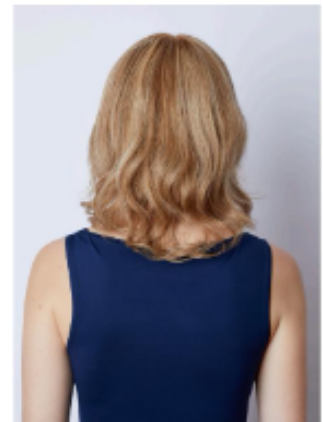
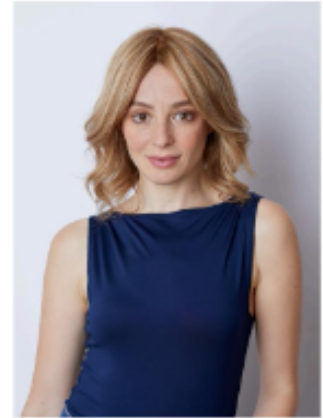
Cap Size: 52-54cm

Length: 10" (25cm)

AVAILABLE COLOURS

Blondes: 102/22R, 14, 245, 246R, 25, 26, 26/22, 6/14R, 6/24R, 613*, **Brunettes:** 1B, 2, 3, 3/4-31, 468, 5, 8, 8/32, **Reds:** 2/135R*, 31, 32*, 33/130*





COLOUR SHOWN: 2416R

JET

Cap Construction: Extended Lace Front, Monofilament Top

Cap Size: 50cm (Petite)

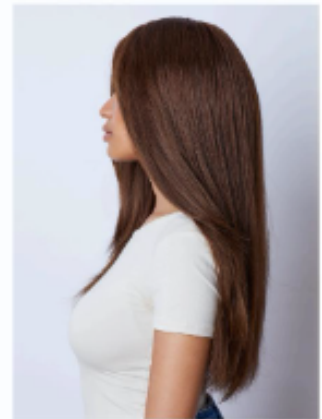
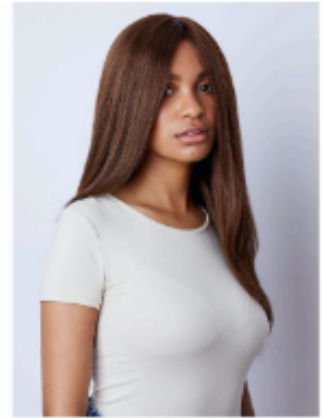
Length: 8" (20cm)

AVAILABLE COLOURS

Blondes: 102/22R, 14, 245, 246R, 25, 26, 26/22*, 6/14R, 6/24R*, 613*, **Brunettes:** 1B, 2, 3, 3/4-31*, 468*, 5, 8, 8/32, **Reds:** 2/135R*, 31, 32*, 33/130*



*While Stocks Last



COLOUR SHOWN: 3

PEARL

Cap Construction: Extended Lace Front, Hand-tied, French Drawn Top

Cap Size: 53.5cm

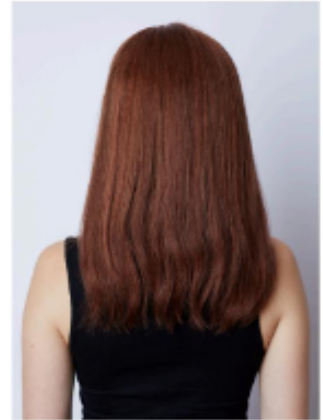
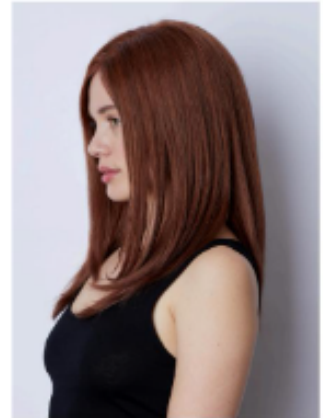
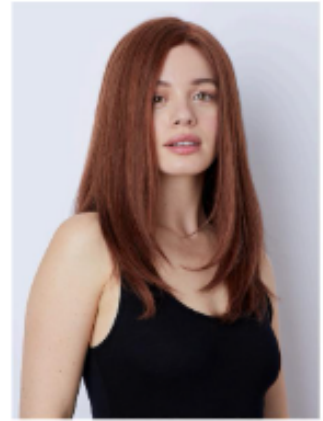
Length: 16" (40cm)

AVAILABLE COLOURS

Blondes: 102/22R, 20R, 246R, **Brunettes:** 1B, 2, 3, 3/5LR, 7/25LR **Reds:** SA811G



*While Stocks Last



COLOUR SHOWN: 31

SUPPLEX

Cap construction: PU Perimeter, Monofilament Top,

Cap Size: 53.5cm (Petite: 49cm)

Length: 9-10" (25cm)

AVAILABLE COLOURS

Blondes: 102/22R, 14, 245*, 246R, 25, 26, 26/22*, 6/14R, 6/24R, 613*, **Brunettes:** 1B, 2, 3, 3/4-31*, 468*, 5, 8, 8/32, **Reds:** 2/135R*, 31, 32*, 33/130*



*While Stocks Last



COLOUR SHOWN: 26

RUBY*

Cap Construction: Lace Front, Monofilament Top
Cap Size: 52-54cm
Length: 4-6" (10-15cm)

AVAILABLE COLOURS

Blondes: 102/22R, 14, 245, 246R, 25, 26, 26/22, 6/14R, 6/24R, 613, **Brunettes:** 1B, 2, 3, 3/4-31, 468, 5, 8, 8/32, **Reds:** 2/135R, 31, 32, 33/130



COLOUR SHOWN: 102/22R

CHILDREN'S GEM

SAPPHIRE /PETITE SAPPHIRE

Cap Construction: Extended Lace Front, Monofilament Top
Cap Size: 48cm (Petite: 46cm)
Length: 12" (30cm)

AVAILABLE COLOURS

Blondes: 102/22R, 14, 246R, 25*, 26, 26/22, **Brunettes:** 1B, 3, 5, 8

PLATINUM

An exclusive European Human Hair collection, designed by the best for the best. Two beautiful handcrafted wigs using the highest quality European hair. The Platinum Collection is designed for those who are striving for perfection and the ultimate confidence.

COLOUR SHOWN: VELA BLONDE



AVAILABLE COLOURS

Blondes: Hydra Blonde, Vela Blonde
Brunettes: Carina Brown, Lynx Brown, Orion Black, Phoenix Brown
Reds: Tucana Red

OPAL*

Cap Construction: Secure Fit Cap, Natural Lace Front
Cap Size: 54-55cm
Length: 8-12"

COLOUR SHOWN: HYDRA BLONDE



AVAILABLE COLOURS

Blondes: Hydra Blonde, Vela Blonde
Brunettes: Carina Brown, Lynx Brown, Orion Black, Phoenix Brown
Reds: Tucana Red

ONYX*

Cap Construction: Secure Fit Cap, Natural Lace Front
Cap Size: 54-55cm
Length: 10-12"

ENHANCERS

Gem Premium Enhancers are the newest additions to the Gem Enhancer family. These Enhancers differ from the others as they have "extra qualities". They are very light-weight and are almost undetectable to the naked eye. Gem Premium Enhancers are available in a smaller range of Gem colours, please refer to our colour chart.

PREMIUM

COLOUR SHOWN: 246R



AVAILABLE COLOURS

Blondes: 246R, 25
Brunettes: 1B, 3, 3/4-31, 5

Base Size: 3.5" x 5.5"
Length: 10-12" (28cm)

A single layer of fine welded monofilament. It is extremely light-weight and has been designed with long return ends, leaving the hair looking very natural.

PREMIUM PARTING ENHANCER

COLOUR SHOWN: 2



AVAILABLE COLOURS

Blondes: 246R, 25
Brunettes: 1B, 3, 5

Base Size: 6" x 4.5"
Length: 10-12" (30cm)

A single French drawn base, covered with fine monofilament mesh. The finished look is extremely natural, with hair appearing to be growing from the scalp.

PREMIUM HAIR ENHANCER

COLOUR SHOWN: 246R



AVAILABLE COLOURS

Blondes: 102/22R, 14, 245, 246R, 25, 26*, 26/22, 613,
Brunettes: 1B, 2, 3, 3/4-31*, 468, 5, 8, 8/32, **Reds:** 31*, 32*, 33/130* **Greys:** 1820*, 520*, 550*

Base Size: 5" x 5.5"
Length: 7"-9"

HAIR ENHANCER

COLOUR SHOWN: 32



AVAILABLE COLOURS

Blondes: 102/22R, 14, 245*, 246R, 25, 26*, 26/22, 613,
Brunettes: 1B, 2, 3, 3/4-31*, 468, 5, 8, 8/32, **Reds:** 31, 32*, 33/130* **Greys:** 1820*, 520*, 550*

Base Size: 6" x 8.5"
Length: 7"-9"

LARGE ENHANCER

COLOUR SHOWN: 3/4 31*



AVAILABLE COLOURS

Blondes: 102/22R, 14, 245*, 246R, 25, 26, 26/22, 613,
Brunettes: 1B, 2, 3, 3/4-31*, 468, 5, 8, 8/32, **Reds:** 31, 32*, 33/130* **Greys:** 1820*, 520*, 550*

Base Size: 5" x 5.5"
Length: 12"-14"

LONG HAIR ENHANCER

COLOUR SHOWN: 3



AVAILABLE COLOURS

Blondes: 102/22R, 14, 245*, 246R, 25, 26, 26/22*, 613*,
Brunettes: 1B, 2, 3, 3/4-31, 468, 5, 8, 8/32, **Reds:** 31, 32*, 33/130* **Greys:** 1820*, 520*, 550*

Base Size: 5" x 5.5"
Length: 7"-9"

PARTING ENHANCER

GEM

LOVES CHANGE



COLOUR SHOWN: EXPRESSO

SEPTIMO* 3/4 HAIRPIECE

Cap Size: 54-55cm
 Length: 18" (45cm)
 Hair Type: Remy Hair

A perfect alternative to extensions, this three quarter hairpiece, which seamlessly integrates into your own hair. A versatile hairpiece which can be sleek and smooth during the day and glammed up during the evening with big bouncy curls. The comb attachment system ensures a comfortable yet secure fit.

AVAILABLE COLOURS

Blondes: 27, Champagne-R, Creamy Blonde, Gold Blonde, Spring Honey, Strawberry Blonde, **Brunettes:** Carina Brown, Dark Chocolate, Espresso, Light Chocolate, Medium Brown



COLOUR SHOWN: EXPRESSO

LOLA* LONG PONYTAIL

Cap Size: 54-55cm
 Length: 18" (45cm)
 Hair Type: Human Hair

A classic, luscious long ponytail made from 100% human hair. A sleek look can be created in minutes! With its honeycomb base, built in comb and two extra hair toggles, the Lola will stay perfectly secure in your hair for as long as you need it to.

AVAILABLE COLOURS

Blondes: Creamy Blonde, Spring Honey, Strawberry Blonde **Brunettes:** Dark Chocolate, Light Chocolate, Medium Brown **Reds:** Chestnut



COLOUR SHOWN: EXPRESSO

APHRODITE* CURLY 3/4 HAIRPIECE

Length: 11-19" (27-48cm)
 Hair Type: Fibre

A synthetic hairpiece that is perfect for giving your natural hair a curly boost. The luscious, wavy style creates body and movement that makes hair appear naturally thick, with a simple comb attachment.

AVAILABLE COLOURS

Blondes: Creamy Toffee, Mochaccino, Platinum Blonde, Spring Honey **Brunettes:** Dark Chocolate, Espresso, Ginger Brown, Golden Brown, Light Chocolate **Reds:** Chestnut, Copper Glaze



COLOUR SHOWN: EXPRESSO

APOLLO* LIGHT WAVY HAIRPIECE

Length: 4-10.5" (10-26cm)
 Hair Type: Fibre

Create a head-turning look with the Apollo! This luscious light wavy hairpiece is perfect for adding volume and length in an instant. Attaches securely with slide combs for all-day hold.

AVAILABLE COLOURS

Blondes: Creamy Toffee, Frost Blonde, Gold Blonde, Mochaccino, Platinum Blonde, Spring Honey, **Brunettes:** Espresso, Ginger Brown, Golden Brown, Light Chocolate, **Reds:** Chestnut, Copper Glaze **Grey:** 56, 60, 600

*While Stocks Last

COLOUR SHOWN: EXPRESSO



*Headband Not Included

ATHENA* 3/4 HAIRPIECE

Length: 6-16" (15-14cm)

Hair Type: Fibre

A glorious straight 3/4 hairpiece that creates a chic and fuller, look to every style.

AVAILABLE COLOURS

Blondes: Gold Blonde, Mochaccino, Platinum Blonde, Spring Honey **Brunettes:** Dark Chocolate, Espresso, Ginger Brown, Golden Brown, Light Chocolate, **Reds:** Chestnut, Copper Glaze

COLOUR SHOWN: COLOUR 60



AURA TOPPER

Length: 7-8" (17-20cm)

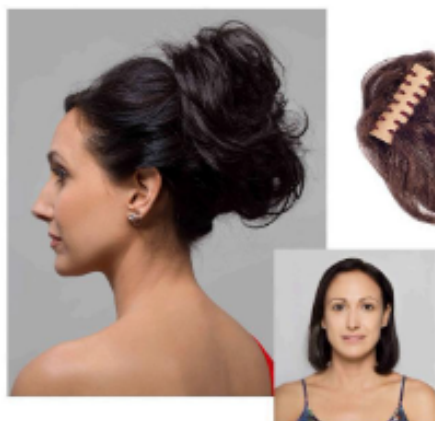
Hair Type: Fibre

A fantastic topper with clips and an optional area to use a headband. Please note a headband is not included with this piece.

AVAILABLE COLOURS

Blondes: Frost Blonde, Gold Blonde, Mochaccino, Platinum Blonde, Spring Honey*, **Brunettes:** Espresso*, Light Chocolate*, **Reds:** Chestnut* **Greys:** 38*, 39, 56, 60, 600

COLOUR SHOWN: EXPRESSO



CUPID MINI CLIP-ON MID-LENGTH PONYTAIL

Length: 8.5" (21cm)

Hair Type: Fibre

A glorious mini clip-on mid-length ponytail.

AVAILABLE COLOURS

Blondes: Creamy Toffee*, Gold Blonde, Mochaccino*, Platinum Blonde, Spring Honey*, **Brunettes:** Dark Chocolate*, Ginger Brown, Golden Brown*, Light Chocolate*, **Reds:** Chestnut*, Copper Glaze*

COLOUR SHOWN: EXPRESSO



HEBE* WRAP AROUND PONYTAIL

Length: 12" (30cm)

Hair Type: Fibre

A cute and modern wrap around ponytail.

AVAILABLE COLOURS

Blondes: Creamy Toffee, Dark Chocolate, Espresso, Frost Blonde, Mochaccino, Platinum Blonde, Spring Honey, **Brunettes:** Dark Chocolate, Espresso, Ginger Brown, Golden Brown, Light Chocolate, **Reds:** Chestnut, Copper Glaze

*While Stocks Last

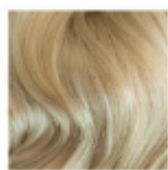
MEN'S COLLECTION



For further information on men's hair systems and other total hair solution services, contact the Aderans Hair Centre today

COLOUR CHART

GEM



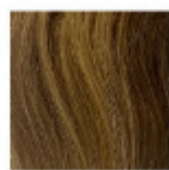
102/22R
Rooted Pale Ash Blonde



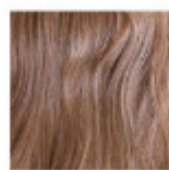
14
Dark Golden Blonde



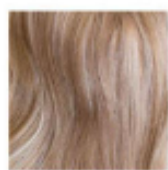
20R
Rooted Champagne Blonde



245
Light Brown w/ Golden Tones



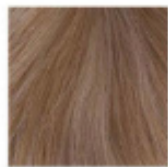
246R
Rooted Light Warm Brown w/
Caramel Blonde Highlights



25
Gold Blonde w/ Creamy Blonde
Highlights



26
Soft Rooted Medium Blonde w/
Lighter Blonde Highlights



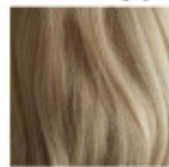
26/22
Gold & Creamy Blonde Blend



6/14R
Rooted Intense Dark Blonde w/
Natural Blonde Lights



6/24R
Rooted Multitonal Intense Dark
Blonde w/ Blonde Lights



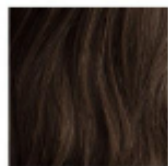
613
Pale Gold Blonde



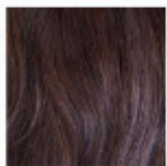
1B
Black/Darkest Brown



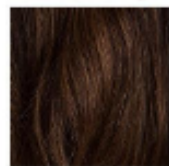
2
Darkest Brown



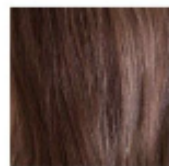
3
Dark Warm Brown



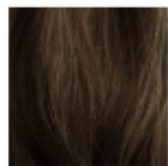
3/4-31
Dark Brown Blend w/
Warm Brown Tones



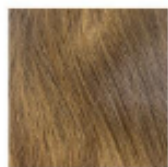
3/5 LR
Long Rooted Dark Warm
Brown w/ Brown-Red Tones



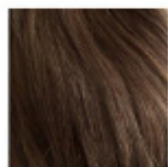
468
Dark Brown w/ Light Brown Tones



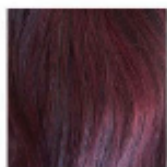
5
Medium Brown



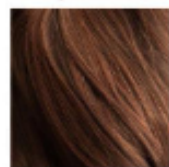
8
Natural Light Brown



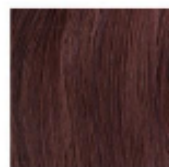
8/32
Medium & Light Brown Blend



2/135R
Rooted Dark Brown & Burgundy Red



31
Multi-Tone Chestnut Red



32
Deep Rich Burgundy



33/130
Deep Copper Red w/ Copper Red Lights



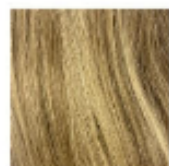
1820
Blonde w/ 20% Grey



520
Medium Brown w/ 20% Grey



550
Medium Brown w/ 50% Grey



7/25LR
Long Rooted Honey Blonde
w/ Golden Lights



SA811G
Creamsicle, Dark Warm Brown
& Chestnut Red Blend

LOVE'S CHANGE



Champagne-R



Creamy Blonde



Creamy Toffee



Frosty Blonde



Gold Blonde



Mochaccino



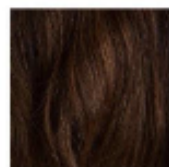
Platinum Blonde



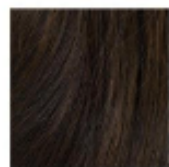
Spring Honey



Strawberry Blonde



Carina Brown



Dark Chocolate



Ginger Brown

Please note all grey content will be synthetic



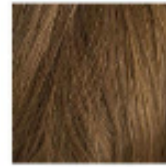
Expresso



Golden Brown



light Chocolate



Medium Brown



39



56



60



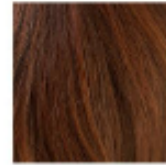
600



38



49



Chestnut



Copper Glaze

PLATINUM



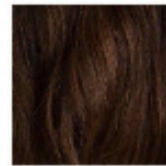
Hydra Blonde



Vela Blonde



Phoenix Brown



Carina Brown



Lynx Brown



Tucana Red



Orion Black

SPECIAL ORDERS

If your favourite existing style or colour has been discontinued from this brochure, we are able to request that our factory make it just for you

The minimum order quantity for such a request is 3 for Human Hair and 5 units for synthetic. For special order, please contact our customer service team on **01273 774 977** or email info@trendco.co.uk

Please check the individual product pages for colour options. Colour options are subject to stock availability. For colour options in petite sizing please refer to our website or contact us.