

# Colour Page

## Gem Human Hair Wigs Incl. Supplex & Gem Hair Enhancers



### Brunettes



1B – Black/Darkest Brown    2 – Darkest Brown    3 – Dark Warm Brown    3/4-31 – Dark Brown mixed with Brown tones. 1cm Rooted    468 – Dark Brown with Light Brown tones. 1cm Rooted    8/32 – Medium & Light Brown Blend    5 – Medium Brown    8 – Light Brown

### Blondes



6/14R – Medium Brown with Honey Highlights    245 – Blonde with golden blonde highlights    246R – Light Warm Brown & Caramel Highlight    6/24R – Medium Brown with Pale Gold Highlights    14 – Dark Golden Blonde    26 – Blonde with dark roots and sunkissed highlights    25 – Gold & Creamy Blonde Highlights    26/22 – Gold & Creamy Blonde Blend

### Blondes



613 – Pale Gold Blonde    102/22R – Pale Ash Blonde

### Reds



2/135R – Dark Brown & Burgundy Blend    33/130 – Vibrant Red Brown Blend    32 – Deep Rich Burgundy    31 – Multi Tone Chestnut Red

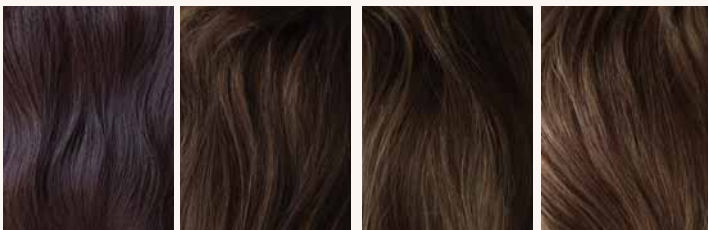
### Greys



550 – Medium Brown with 50% grey    520 – Medium Brown with 20% grey

## Sapphire (Children's Wig)

### Brunettes



1B – Black/Darkest Brown    3 – Dark Warm Brown    5 – Medium Brown    8 – Light Brown

### Blondes



246R – Light Warm Brown & Caramel Highlight    14 – Dark Golden Blonde    26 – Blonde with dark roots and sunkissed highlights    25 – Gold & Creamy Blonde Highlights    26/22 – Gold & Creamy Blonde Blend    102/22R – Pale Ash Blonde



18/20 – Blonde with 20% grey

**Greys – Please note:**  
Only available in Enhancers  
& grey content is fibre hair.

# Gem Premium Enhancers

## Brunettes



1B – Black/Darkest Brown



3 – Dark Warm Brown



5 – Medium Brown

## Blondes



246R – Light Warm Brown & Caramel Highlight



25 – Gold & Creamy Blonde Highlights

# Loves Change Human Hair – Lola & Septimo

## Brunettes



Espresso



Dark Chocolate



Medium Brown



Light Chocolate

## Reds



Chestnut

## Blondes



Spring Honey



Strawberry Blonde



Gold Blonde



Creamy Blonde

# Loves Change Fibre Hair

## Brunettes



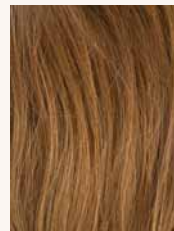
Espresso



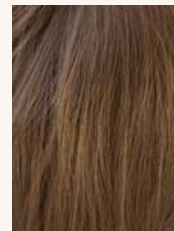
Dark Chocolate



Ginger Brown

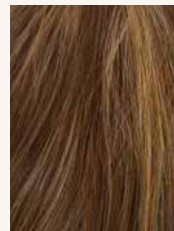


Light Chocolate



Golden Brown

## Reds



Copper Glaze



Chestnut

## Blondes



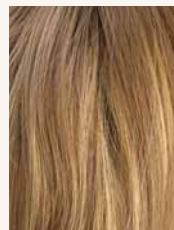
Platinum Blonde



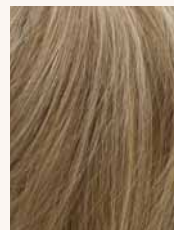
Creamy Toffee



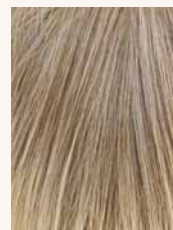
Gold Blonde



Mochaccino



Spring Honey



Frosti Blonde

## Greys



60



600



56



49



39



38



# SENTOO LOTUS COLOURS

Please refer to individual item pages for information on the colours available.



# Amore Collection

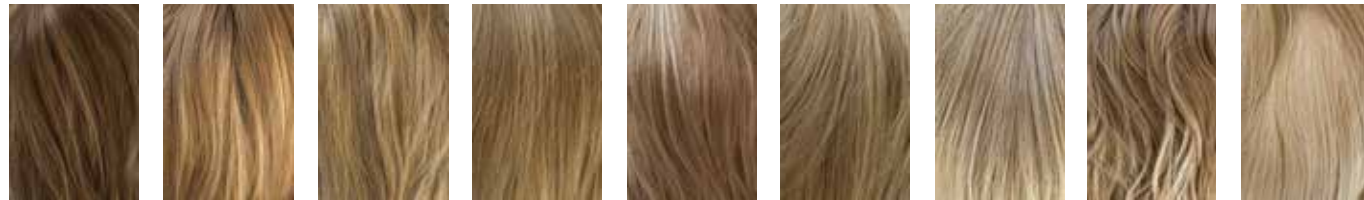
## COLOUR CHART

**Please note:** Not all styles come in all colours, please refer to the individual style page for a list of available colours.

**Hybrant Colours:** have a 1-2cm soft dark root to give the natural appearance of hair growth.

**LR (Long Rooted) Colours:** have a darker longer root of approximately 4-5cm, giving an ombrè effect.

### BLONDES

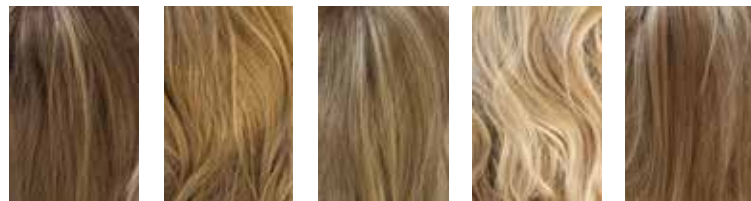


Honey Wheat Mochaccino Harvest Gold Creamy Toffee Strawberry Swirl Spring Honey/T Frosti Blonde Ice Blonde Vanilla Lush



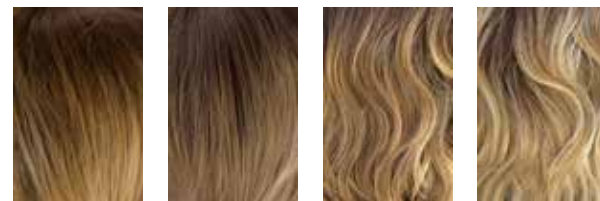
Gold Blonde Sugar Cane Creamy Blonde Platinum Pearl

### HYBRANT BLONDES



Mochaccino-R Spring Honey-R Creamy Toffee-R Rose Gold-R Nutmeg-R/F

### LR BLONDES



Banana Split-LR Macadamia-LR Mochaccino-LR Creamy Toffee-LR

### HYBRANT GRAYS



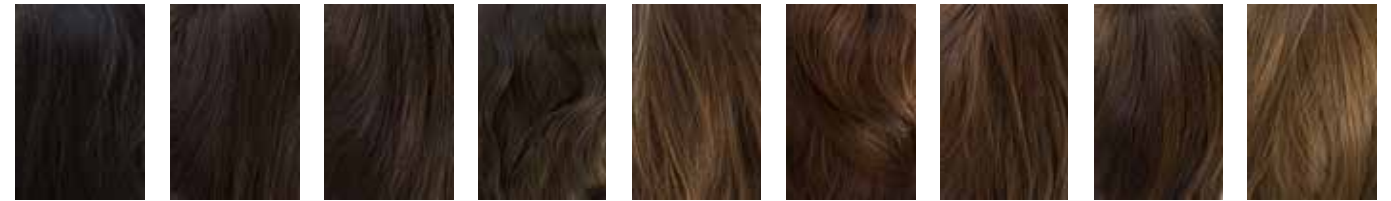
Illumina-R Smokey Gray-R

### GRAYS

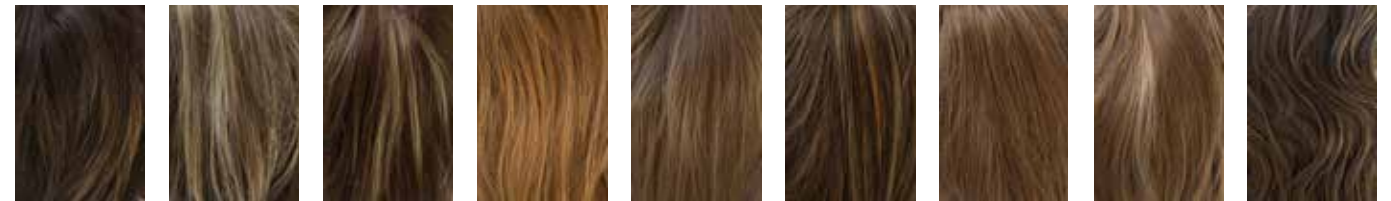


Sandy Silver Silverstone 39 51 56 Silver Mink 60 Simply White

### BRUNETTES

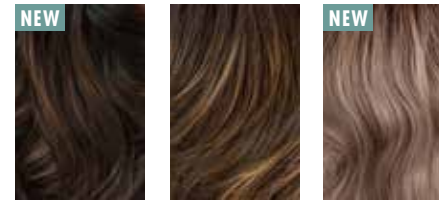


Espresso Cappuccino Dark Chocolate Mocha Brown Coffee Latte Java Frost Ginger Brown Toasted Brown Medium Brown



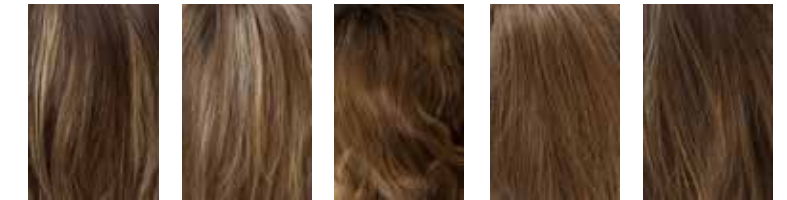
Kahlua Blast Chocolate Frost Iced Mocha Light Chocolate Golden Brown Almond Rocka Marble Brown Maple Sugar Caramel Brown

### LR BRUNETTES



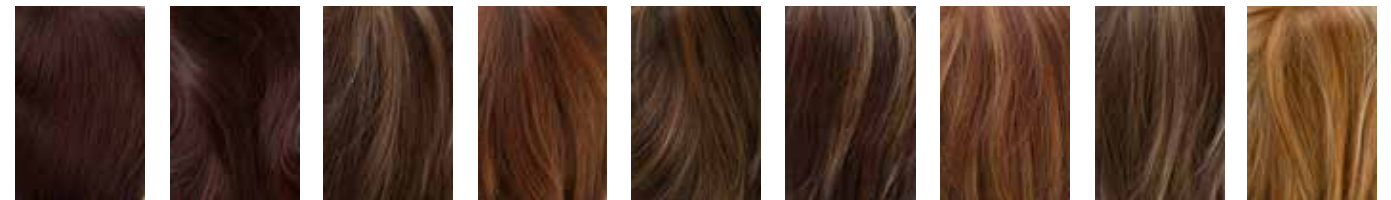
Kandy Brown-LR Marble Brown-LR Milk Tea-LR

### HYBRANT BRUNETTES



Iced Mocha-R Maple Sugar-R Honey Brown-R Marble Brown-R Coffee Latte-R

### REDS



Burgundy Burgundy Rosa Auburn Sugar Chestnut Ginger-H Raspberry Ice Irish Spice Coconut Spice Apricot Frost



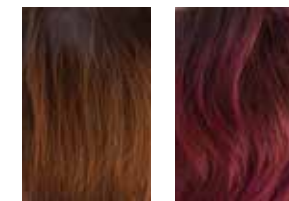
Rusty Red Copper Glazer Mulberry Brown

### HYBRANT REDS



Auburn Sugar-R

### LR REDS



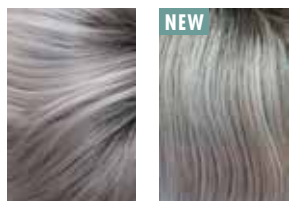
Crimson-LR Plumberry Jam-LR

### MELTED BLENDS



Melted Marshmallow Melted Sunset Melted Coconut

### HYBRANT PASTELS



Bubblegum-R Snowy Sapphire-R



# Noriko Collection

## COLOUR CHART

**Please note:** Not all styles come in all colours, please refer to the individual style page for a list of available colours.

**Hybrant Colours:** have a 1-2cm soft dark root to give the natural appearance of hair growth.

**LR (Long Rooted) Colours:** have a darker longer root of approximately 4-5cm, giving an ombre effect.

**For a true representation of colour, using a colour swatch is always recommended.**

### LR BLONDES



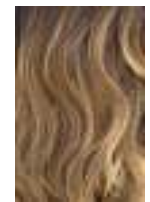
Banana Split-LR



Creamy Toffee-LR



Macadamia-LR

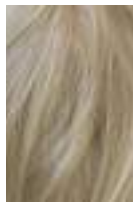


Mochaccino-LR

### BLONDES



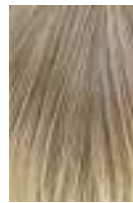
Caramel Cream



Creamy Blonde



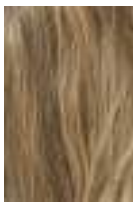
Creamy Toffee



Frosti Blonde



Gold Blonde



Harvest Gold



Peach Gold



Platinum Pearl



Spring Honey



Strawberry Swirl



Sunny Blonde



Vanilla Lush

### HYBRANT BLONDES



Butter Pecan-R



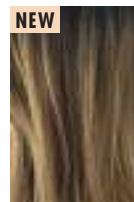
Champagne-R



Creamy Toast-R



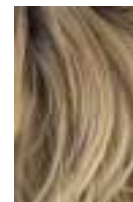
Creamy Toffee-R



NEW  
Desert Sand-R



Honey Wheat-R



Mocha-H



Mochaccino-R



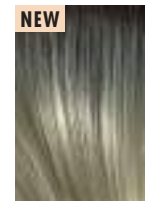
Nutmeg R/F



NEW  
Rose Gold-R



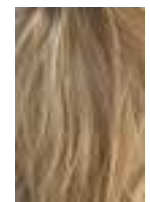
Sandalwood-H



NEW  
Seashell Blond-R



Spring Honey-R/T



Sugar Cane-R

### GRAYS



38



51



56



60



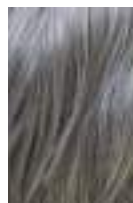
Black Onyx



Midnite Pearl



Sandy Silver



Silver Stone



Simply White

### HYBRANT GRAYS



Moonstone



NEW  
Silver Stone-R



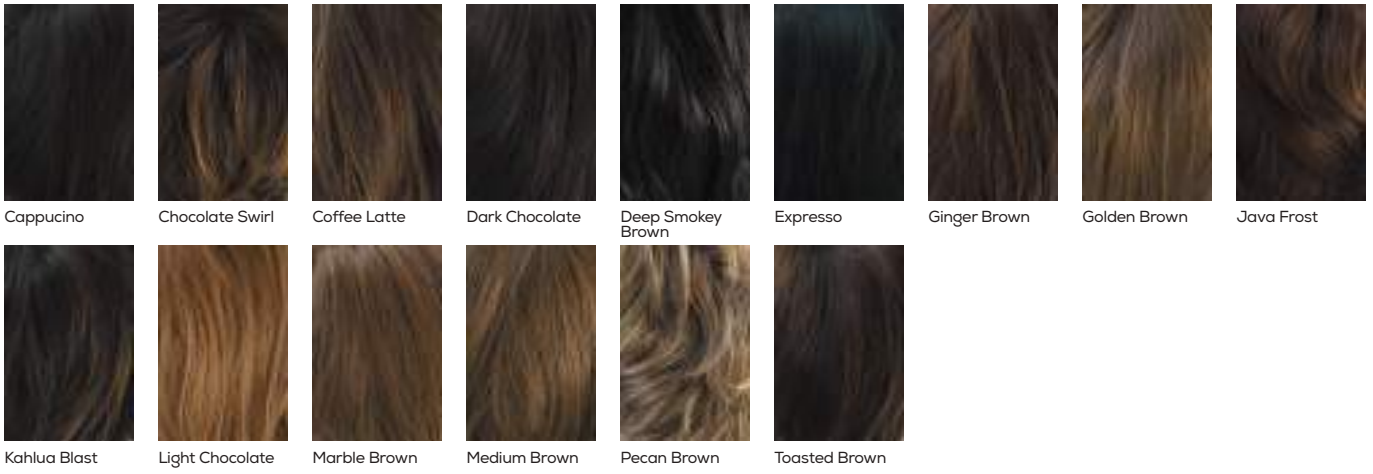
NEW  
Smoky Gray-R

### HYBRANT UNDERLIGHTS



Cherrywood

BRUNETTES



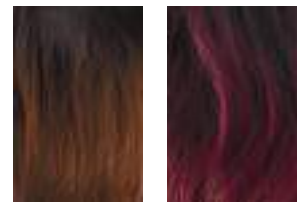
Cappucino Chocolate Swirl Coffee Latte Dark Chocolate Deep Smokey Brown Espresso Ginger Brown Golden Brown Java Frost  
Kahlua Blast Light Chocolate Marble Brown Medium Brown Pecan Brown Toasted Brown

HYBRANT BRUNETTES



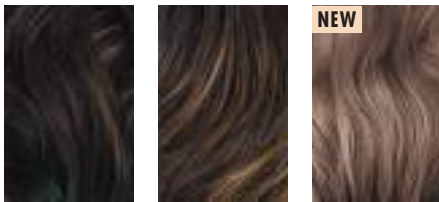
Almond Rocka-R Chocolate Frost-R Coffee Latte-R Honey Brown-R Iced Mocha-R Maple Sugar-R

LR REDS



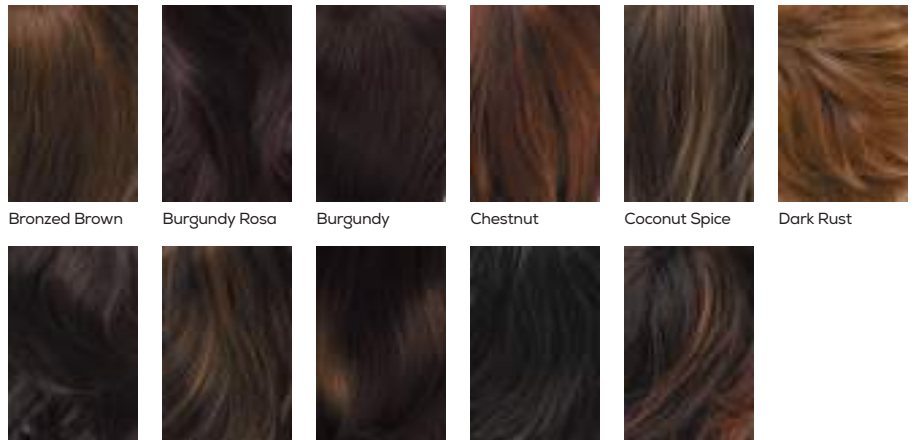
Marble Brown-R Crimson-LR Plumberry Jam-LR

LR BRUNETTES



Kandy Brown-LR Marble Brown-LR Milk Tea-LR

REDS



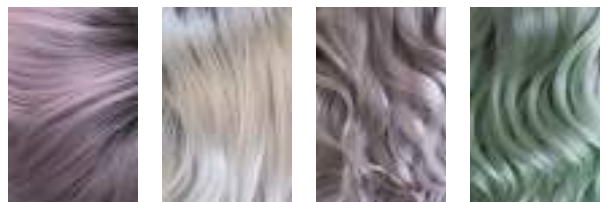
Bronzed Brown Burgundy Rosa Burgundy Chestnut Coconut Spice Dark Rust  
Garnet Glaze Ginger-H Mulberry Brown Red Brown Red Pepper

HYBRANT REDS

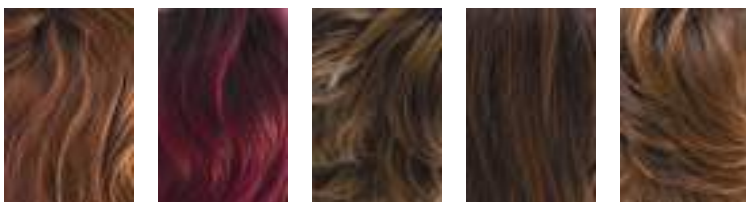


Almond Spice-R Auburn Sugar-R Burnt Sienna-R Cayenne Spice-R Copper Glaze-R

HYBRANT PASTELS

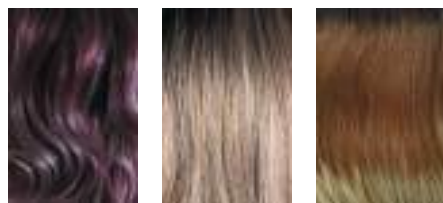


Bubblegum-R Illumina-R Lavendar Blush-R Seaglass-R



Irish Space-R Plumberry Jam-R Raising Glaze-R Raspberry Ice-R Terracotta-H

MELTED BLENDS



Melted Plum Melted Marshmallow Melted Coconut



# Hi Fashion Collection

## COLOUR CHART

**Please note:** Not all styles come in all colours, please refer to the individual style page for a list of available colours.

**Hybrant Colours:** have a 1-2cm soft dark root to give the natural appearance of hair growth.

**LR (Long Rooted) Colours:** have a darker longer root of approximately 4-5cm, giving an ombré effect.

### BLONDES



Butter Pecan Chai Cream Creamy Blonde Creamy Toffee Frosti Blonde Gold Blonde Harvest Gold Honey Wheat Ice Blonde



Mochaccino Spring Honey Strawberry Swirl Sugar Cane Vanilla Bean Vanilla Lush

### HYBRANT BLONDES



Champagne-R Creamy Toffee-R Mochaccino-R Nutmeg-R & F



Rose Gold-R Spring Honey-R Sugar Cane-R

### LR BLONDES



Creamy Toffee-LR Macadamia-LR



Mochaccino-LR

### MELTED TONES



Melted Ocean Melted Marshmallow Melted Sunset



Mochaccino-LR Melted Coconut

### GRAYS



60 Midnite Pearl Sandy Silver Silver Stone

### HYBRANT GRAYS



Illumina-R Smoky Gray-R

### BRUNETTES



Almond Rocka Black Cappucino Caramel Brown Chocolate Frost Coffee Latte Dark Chocolate Espresso Ginger Brown



Iced Mocha Java Frost Maple Sugar Marble Brown Mocha Brown Toasted Brown

### HYBRANT BRUNETTES



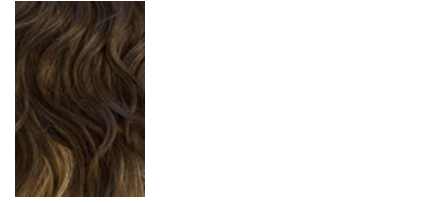
Iced Mocha-R Maple Sugar-R

### LR BRUNETTES



Marble Brown-R Milk Tea-LR

### HYBRANT UNDERLIGHTS



Honeycomb Brown

### REDS



Apricot Frost Auburn Sugar Burgundy Rosa Cayenne Spice Chestnut Coconut Spice



Copper Glaze Garnet Glaze Ginger H Irish Spice Razberry Ice Red Pepper

### LR REDS



Crimson-LR Plumberry Jam-LR

### HYBRANT REDS



Auburn Sugar-R Almond Spice-R

### PASTELS



Snowy Sapphire-R Watermelon-R Pastel Blue-R Pastel Rainbow-R Pastel Pink

For a true representation of colour, using a colour swatch is always recommended



# Stimulate Collection Colour



espresso  
4.6.2

darkchocolate  
6.33.4

coffeebrown  
8.12.6

chocolate  
830.6



nougat  
12.8.20

mocca  
830.12.27

bernstein  
12.26.19

darksand  
12.20.22



sand  
14.26.20

caramel  
20.26.14

sandyblonde  
16.22.14

champagne  
22.26.25



lightchampagne  
23.24.25

darkauburn  
33.130.2

auburn  
33.130.4



pepper  
39.44

smoke  
48.38.36

stonegrey  
58.51.60

pearlblonde  
101.16.14



pearl  
101.14

snow  
60.56.58

silver  
60.56

white  
60

## MIX

Modische Farbmischung und Strähnung  
Fashionable colour blend and high/lowlights  
Effet méché dans des coloris tendance  
Miscela di tonalità diverse alla moda  
Mezcla de colores y mechas de moda  
Модный микс цветов и мелирование

## ROOTED

Natürliche Ansatzfarbgebung  
Naturally rooted colours  
Effet racine dans un ton plus foncé  
Effetto ricrescita: la base delle meche è scura  
Raíz naturalmente más oscura  
Эффект отросших корней

## DARK

Dunklere Variante der abgebildeten Farbe  
Darker variety of pictured colour  
Variation plus foncée de la couleur  
Variante più scura del colore raffigurato  
Variante más oscura del color mostrado  
Более темная версия изображенного цвета

## LIGHT

Hellere Variante der abgebildeten Farbe  
Brighter variety of pictured colour  
Variation plus claire de la couleur  
Variante più chiara del colore raffigurato  
Versión más clara del color mostrado  
Более светлая версия изображенного цвета

## HOT

Intensivere Variante der Grundfarbe  
More vivid variety of base colour  
Variation plus intense de la couleur  
Variante più accesa del colore di base  
Variante más intensa del color básico  
Более интенсивный вариант основного цвета



# colours



# COLOUR CHART - MENS COLLECTION

*All of our Fibre, Human & European hair systems (except Aki) are available in 20 natural colours.*

*\*Please note all grey content in all our hair systems are fibre.*

*\*\*E.G Colour 340 – Base colour 3 with 40% grey content*

*\*\*\*Colours may not be a full representation on paper, colour rings are available to purchase online or in the salon.*



1B



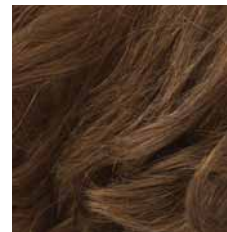
1B10



3



5



6



23



60



220



240



340



365



380



520



540



565



580



620



720



1720



1820



# COLOUR CHART - AKI

*The AKI is part of the Sentoo collection, meaning it has its own unique colour range from the other Men's hair systems. Aki is available in 25 natural colours.*

*\*Colours may not be a full representation on paper, colour rings are available to purchase online or in the salon.*



1B



3



5



6



7



12



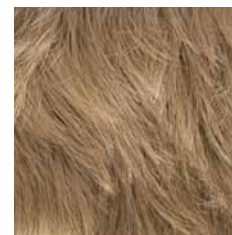
18



20



24



32



38



39



40



51



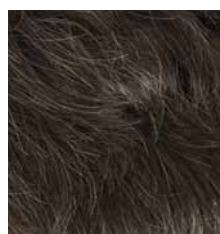
56R



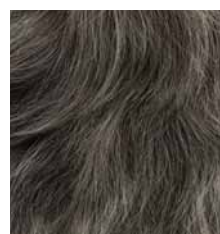
60



320



410



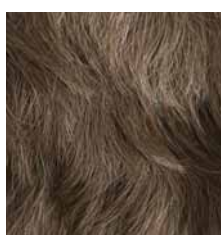
446



550



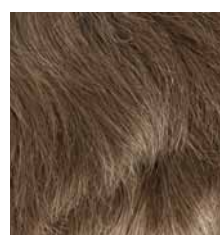
580



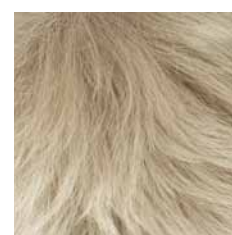
610



640



720



2080

# Colour Chart

7 Exclusive  
Platinum Collection  
Colours



Vela Blonde



Hydra Blonde



Phoenix Brown



Carina Brown



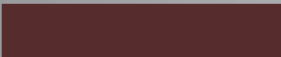
Lynx Brown



Tucana Red



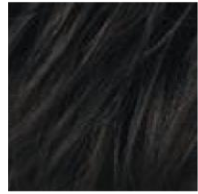
Orion Black



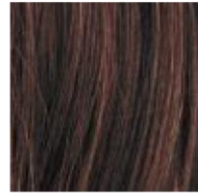
\*Colours may not be a full representation on this chart. We recommend that you purchase a Platinum Collection colour swatch ring to find your perfect colour.



# COLORS



espresso  
2.4.8



darkchocolate  
4.33



cinnamonbrown  
6.30.33



chocolate  
830.27.6



hazelnut  
830.31.6



bernstein  
12.20.31



lightbernstein  
12.26.27



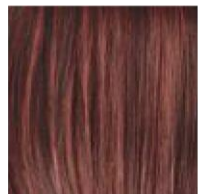
sandmulti  
20.12.22



sandyblonde  
16.22.20



champagne  
101.20.23



cherryred  
133.130.33



rosewood



salt/pepper  
51.44.39



snow  
60.56.58

## Stimulate HiTec (Heat Resistant)



# Alexander Couture Collection

## Available Colour

### BRUNETTES



Coffee Latte Dark Chocolate Ginger Brown Marble Brown Chocolate Frost-R Coffee Latte-R Iced Mocha-R

### HYBRANT BRUNETTES

### LR BRUNETTES

### BLONDS



Marble Brown-R Maple Sugar-R Marble Brown-LR Creamy Blond Creamy Toffee Frosti Blond Strawberry Swirl

### MELTED BLONDS

### HYBRANT BLONDS



Spring Honey Melted Marshmallow Champagne-R Creamy Toffee-R Mochaccino-R Spring Honey-R Sugar Cane-R

### LR BLONDS

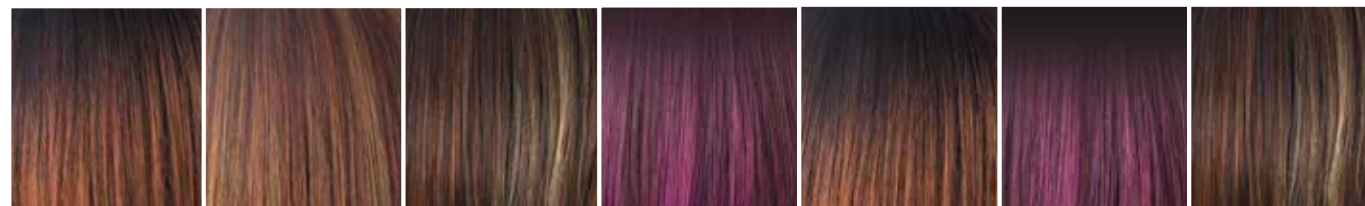
### REDS

### HYBRANT REDS



Nutmeg-F Cream Toffee-LR Macadamia-LR Mochaccino-LR Spring Honey-LR Raspberry Ice Auburn Sugar-R

### LR REDS



Crimson-R Irish Spice-R Raspberry Ice-R Plumberry Jam-R Crimson-LR Plumberry Jam-LR Raspberry Ice-LR

### GRAYS

### HYBRANT GRAYS



Silver Stone™ 60 Illumina-R Moonstone



# Muse Collection Available Colour



DUSTY ROSE



SMOKY FOREST



FROZEN SAPPHIRE



LUNAR HAZE



MIDNIGHT STONE



GRAPE BURST



ICY PETAL



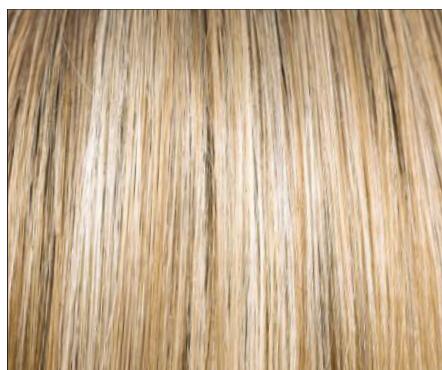
LILAC CLOUD



POLAR SKY



COSMIC TEAL



CREAMY TOFFEE



MARBLE BROWN